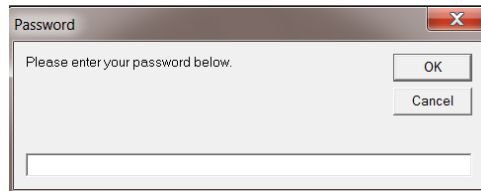


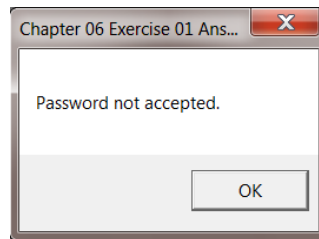
Chapter 5

Programs

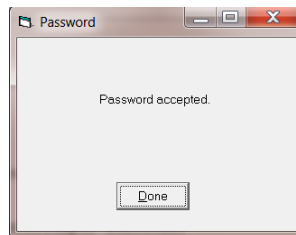
1. Create a Password application that uses an input box to accept a password from the user before the interface for the program is displayed. The user can try to enter the correct password five times before a message box is display saying the password is not accepted and exits the program. The application should display an input box similar to the following when the program is first run:



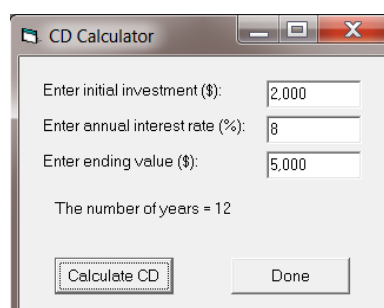
The application should display a message box similar to the following after the user has entered the wrong password five times:



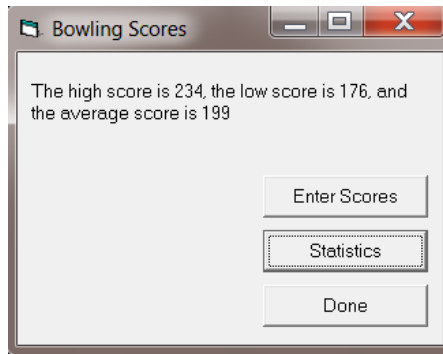
The application interface should look similar to the following after the user has entered the correct password:



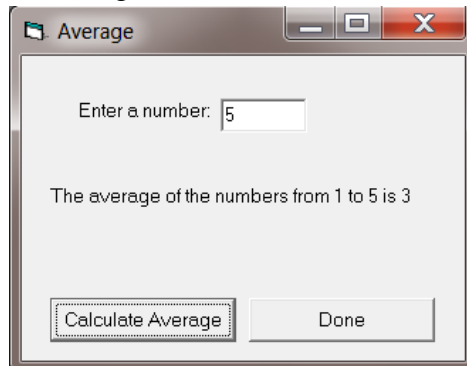
2. A certificate of deposit (CD) allows you to invest an amount of money at a specified interest rate for a period of time. Create a CD Calculator program that accepts the initial investment amount, the annual interest rate, and the desired ending value in input boxes and then display the number of years it will take for the CD to be worth the specified ending value when interest is compounded annually. The CD value at the end of each year can be calculated by the formula $CD\ Value = CD\ Value + (CD\ Value * Interest\ Rate)$. To determine the number of years it will take for the CD to reach the desired ending value, repeatedly execute the formula until the CD Value is equal to or greater than the desired ending value. The program should look like the following:



3. Create a Bowling Scores program that allows the user to enter as many bowling scores as desired and then displays the high score, low score and average bowling score. The program should look similar to the following after selecting the Enter Scores button, entering scores, and then clicking on the Statistics button:



4. Create an Average program that calculates the average of a series of numbers starting at 1 to the number entered by the user. For example, if the user enters 5 then the program would calculate the average of 1,2,3,4, and 5. The program should be similar to the following:



5. Create a Sum program that calculates the sum of the numbers between two numbers inclusive entered by the user. For example, if the user enters 10 and 15 then the application would calculate 10+11+12+13+14+15. The program should look similar to the following.

